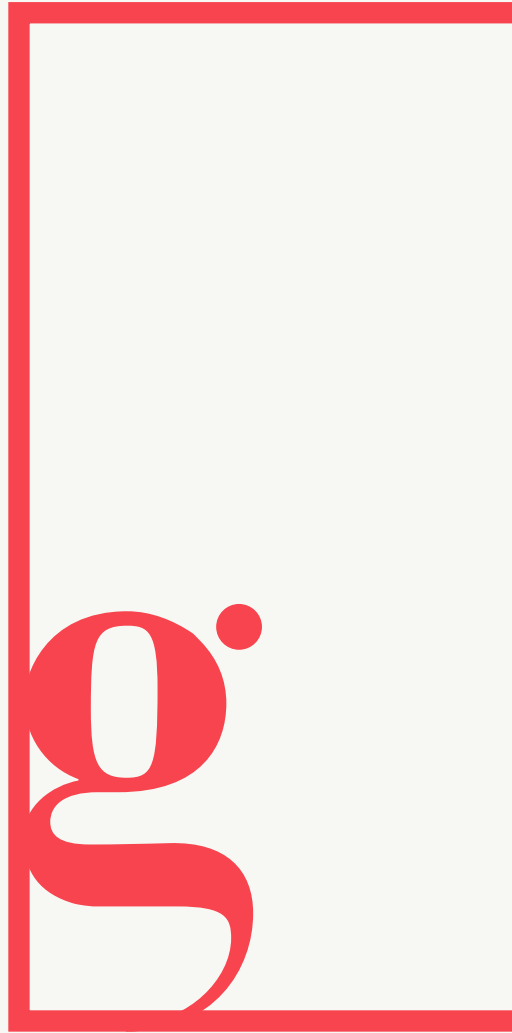




the glassworks



STYLISH, LIGHT-FILLED
APARTMENTS



CONTEMPORARY APARTMENTS

THE GLASSWORKS BRINGS
URBAN LIVING TO BROMLEY WITH
A SELECTION OF STUDIO, ONE
AND TWO BEDROOM APARTMENTS

The Glassworks offers 28 intelligently
designed apartments fit for modern living.

These light-filled homes combine
contemporary elegance and the best of
modern technology and innovation to make
them the perfect place to relax and unwind.

With fast links into central London,
outstanding shopping and entertainment,
and a vibrant local community,
The Glassworks is the place to be
in Bromley.



THE DEVELOPMENT

DESIGNED FOR LIVING, RELAXING AND ENTERTAINING

All the apartments benefit from integrated kitchen appliances, double glazing and a video entry system, and the reception rooms are set up for digital TV.

LOCAL AREA

A THRIVING LOCAL AREA

The Glassworks is located in a thriving community that offers outstanding shopping, lovely parks and green spaces, and fast links into central London.

SHOPPING AND ENTERTAINMENT

The development is less than a mile from The Glades Shopping Centre, home to 135 leading high street stores and independents. Shops include M&S, Debenhams, Apple, Jack Wills, Waterstones, Monsoon and Zara, to name but a few. Belgo, Wagamama and Carluccio's are some of the eateries in the centre's buzzing restaurant terrace.

The apartments couldn't be better situated for supermarkets, with a Tesco Superstore just a four-minute walk away and a Waitrose a short car or bus ride away.

Film buffs can choose from the local Picturehouse or the nine-screen Vue Cinema in Bromley's new St Mark's Square development, whilst theatre-goers can enjoy productions at Bromley's two renowned theatres, the Churchill and the Bromley Little Theatre.



LOCAL AREA



EATING AND DRINKING

There are no end of restaurants, pubs and cafés to choose from just a short distance from The Glassworks. Local restaurants include the excellent Brazilian steakhouse, Brassett Churrascaria and Don Giovanni, a classic neighbourhood Italian with a first-class reputation. Slightly further afield in north Bromley locals rave about The Cow & Pig, which uses locally sourced ingredients and serves a not-to-be-missed Sunday lunch.

The family-owned Hollywood Café around the corner from The Glassworks is a popular local hangout and there are a number of welcoming pubs such as The Oak (great food and live music) and The Bricklayers Arm (a traditional pub that serves local Kentish ales).

The new St Mark's Square development in Bromley is home to nine new restaurants, including Pizza Express, Nando's and Prezzo.

SPORTS AND LEISURE

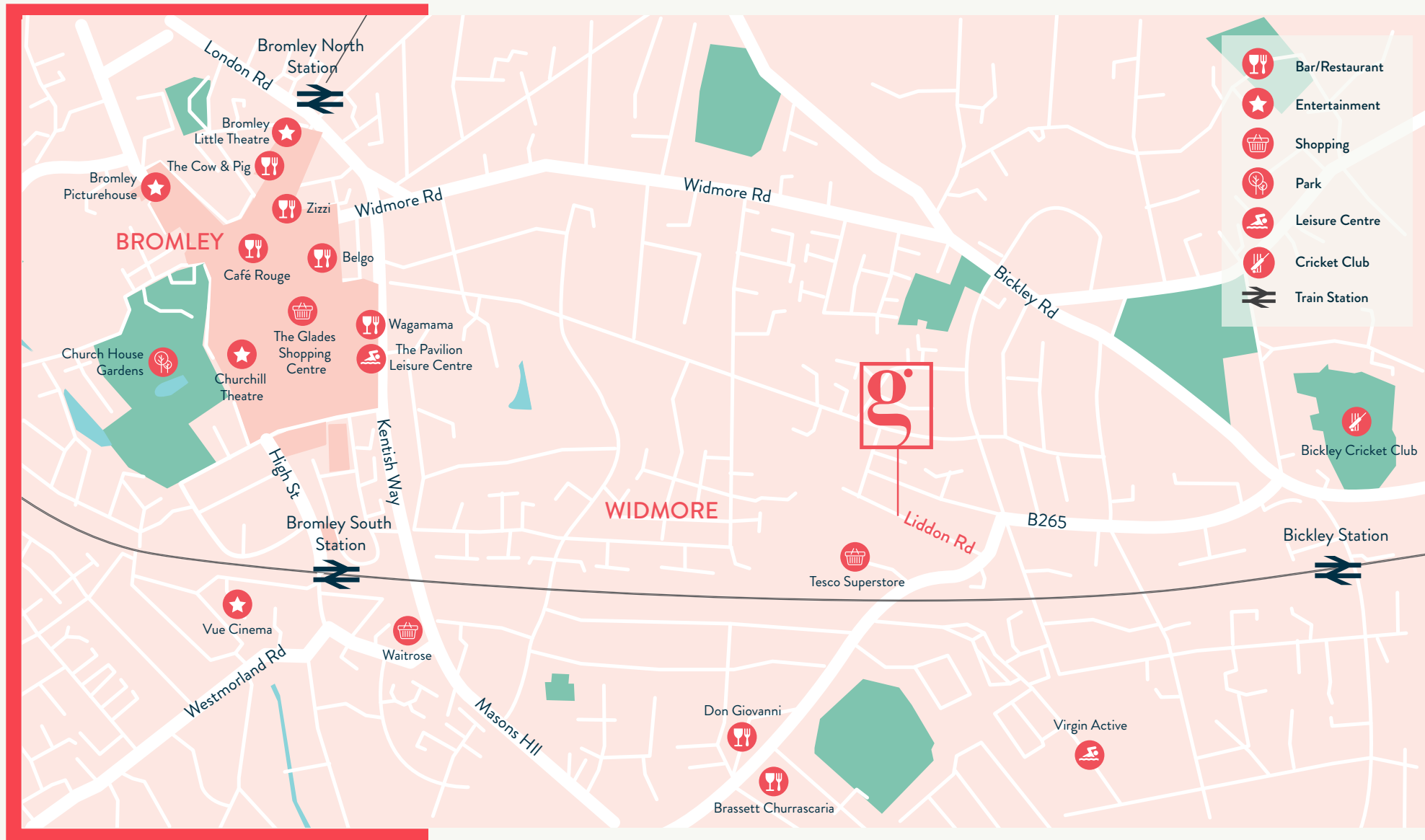
Sports and fitness enthusiasts living in The Glassworks will be spoilt for choice. Local gyms include a Virgin Active Health Club (within half a mile), The Pavilion Leisure Centre and Canons Health Club. There are also any number of tennis, squash, football and cricket clubs in the area, plus two highly regarded golf clubs and a driving range.

Bromley is one of London's greenest suburbs with 30 square miles of open spaces and parks making it the perfect location for long strolls and summer picnics.

LOCAL AREA



LOCAL AREA



TRANSPORT

NATIONAL RAIL

FROM BROMLEY SOUTH STATION

– Zone 5, a 21-minute walk (1.1 miles) or 3 stops on the bus from Holmesdale Road, which is a three-minute walk away (0.1 miles)

London Victoria 16 minutes
Oxford Circus 22 minutes
Canary Wharf 40 minutes
St Pancras International 40 minutes

DIRECT FROM BICKLEY STATION

– Zone 5, a 14-minute walk (0.7 miles)

London Victoria 32 minutes
London Blackfriars 39 minutes
City Thameslink 41 minutes
Farringdon 43 minutes
London St Pancras 48 minutes

BUSES

There are regular buses from Homesdale Road (a three-minute walk to the bus stop), including to Lewisham, Bromley town centre, Bromley South, Bromley North and Crystal Palace.

* Journey times are approximate. Source: www.tfl.com, National Rail and Google maps



SPECIFICATIONS

LIVING/ KITCHEN AREA

Luna Matt Grey eye and base level units,
with dark grey worktops
Ilma spring chrome tap
Stainless steel kitchen sink
Integrated Beko appliances: fridge/freezer,
oven, electric hob, extractor fan, washer/dryer

BATHROOM AND W/C

Sassari Cloud floor tiles
Punta Molara matt porcelain tiles
Chrome finish shower valve combined with
fixed head and shower arm
Stone resin shower trays
Fixed panel glass shower screens
White WC with soft close seat
Gloss white wall hung vanity unit
Chrome towel rail

INTERNAL FINISHES

Charcoal slim line aluminium windows
Matt white sockets, switches and downlights

AUDIO/ VISUAL

Pre-installed video entry system
Communal terrestrial and satellite television
(e.g. Sky) reception system. TV outlets in
living rooms and bedrooms

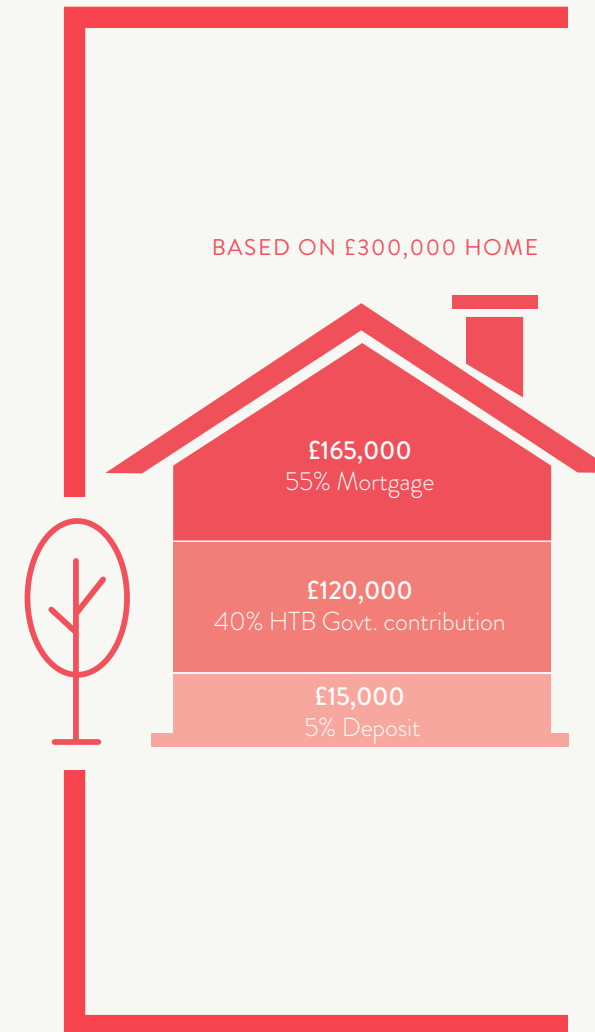
COMMON AREAS

Secure communal bike storage
Secure ground floor entry with door entry
call system (private entrances to some flats)
Communal roof terrace for residents of
Glassworks West





HELP TO BUY



BUY YOUR NEW HOME SOONER THAN YOU THINK WITH HELP TO BUY

The Help to Buy scheme could help you realise the dream of owning your home in the capital.

You may only need to secure a mortgage for up to 55% of the value of your new home.

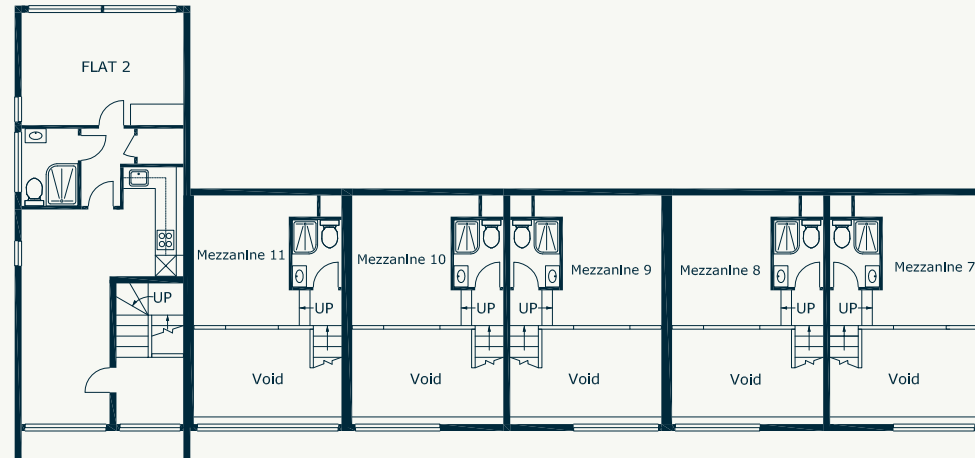
When you put down as little as a 5% deposit on a newly built home, you can get a Government equity loan for up to 40% of the purchase price.* The loan is interest free for five years and can be repaid at any time or when you sell your home.

Help to Buy is available on all homes in The Glassworks.

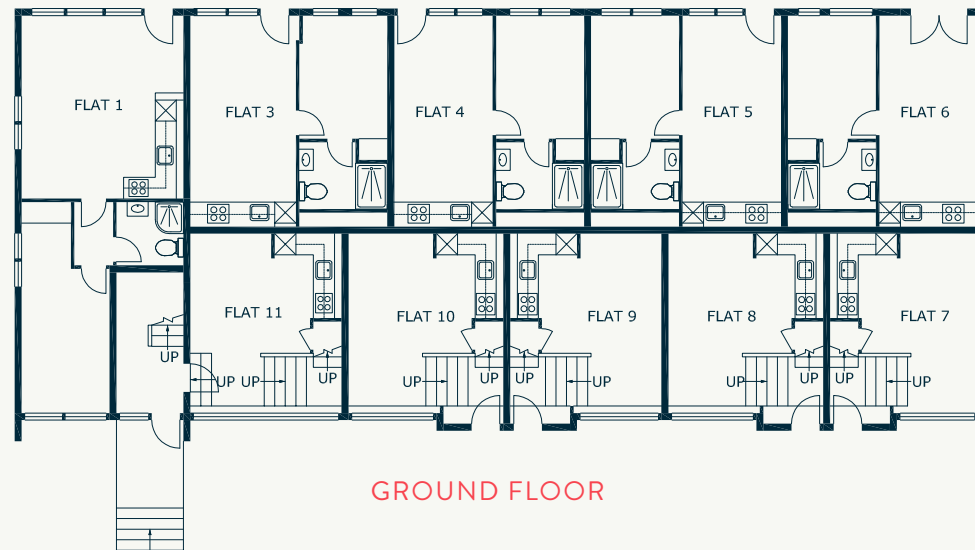
*Help to Buy loans are subject to eligibility



FLOORPLAN
GLASSWORK EAST



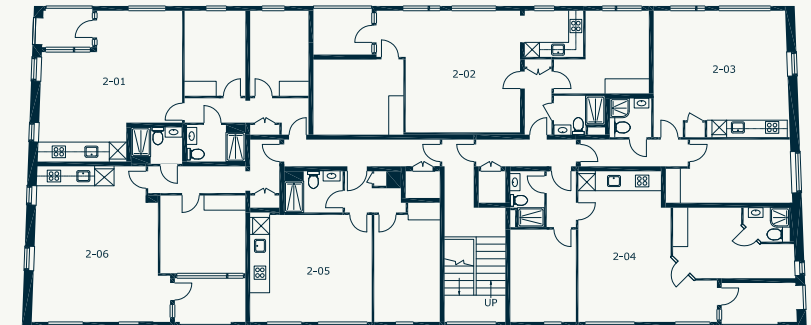
FIRST FLOOR



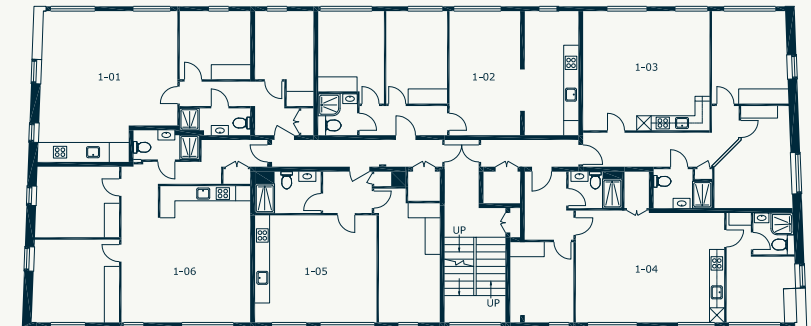
GROUND FLOOR

24

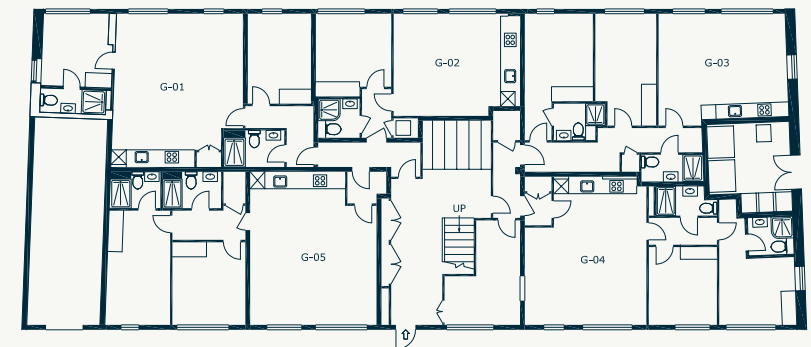
FLOORPLAN
GLASSWORK WEST



SECOND FLOOR



FIRST FLOOR



GROUND FLOOR

25

THE DEVELOPER

ABOUT THE DEVELOPER

Seeing potential where others do not, London Green specialises in the conversion of commercial properties into quality homes, as well as the development of innovative large-scale housing schemes.



L O N D O N G R E E N

These particulars are compiled with care to give an indicative description but we cannot guarantee their accuracy, nor do they constitute an offer or contract. All fixtures and finishes are indicative and subject to change. All journey times stated are approximate. All images of the building and interiors are computer generated or from a previous development. Glassworks is a preferred marketing name only and may not be adopted as the postal address.



the glassworks

